

Eco-eye Smart Commercial Electricity monitors

Eco-eye design and manufacture a range of electricity monitors for use in number of different applications including commercial installations.

Eco-eye Smart consists of 4 basic components:

- Split core current transformer sensors available in 4 sizes
- Transmitter with sockets for up to 3 sensors
- Monitor to display and record the 4 second interval real-time readings.
- Computer connectivity



Key Features:

- Easy to install and remove
- Monitors up to 3 phases
- 4 sizes of sensor available.
- Up to 200 amps per phase
- Monitor displays real-time readings updated every 4 seconds
- Unique traffic light load indicator
- Accumulator and history can be reset
- Offline data logging to a memory card
- Optional USB interface for real-time feed to PC or network
- 2 year battery life
- Firmware upgradable

If you require further information on Eco-eye products, we would be very glad to hear from you.

Tel: 00 44 (0) 1903 851910

Fax: 00 44(0) 1903 851911

Email: info@eco-eye.com

**Eco-eye Ltd
Lancing,
West Sussex,
BN15 8TA,
United Kingdom.**



Efficient technology for today's world

Smart 3pA and Smart 300/600 compared

For commercial applications there are 2 models:

Smart 3pA for short to medium detailed analysis of the 3 phases for phase balancing or detailed investigation of individual circuits

Smart 300/600 for longer term analysis of the total use of electricity.

	Smart 300/600	Smart 3pA
Monitor shows real-time total kW	✓	✓
Monitor shows real-time total Amps	✓	✓
Monitor shows real-time total cost	✓	
Monitor shows 3 separate phases real-time kW		✓
Monitor shows 3 separate phases real-time Amps		✓
Memory card records total amps every 4 seconds	✓	
Memory card records 3 individual phases every 4 seconds		✓
Traffic light LEDs show total use	✓	✓
Target graph	✓	
USB interface for real-time display on a PC	✓	option
Trax PC software View day, week, month or year Readings stored in a database	✓	
Smart 3 PC software View day details or summary Readings stored in daily detailed csv files		✓
Choice of sensor sizes (diameter, to fit round single core cable)	300 – 13mm 600 – 17.5mm	13mm 17.5mm 24mm 36mm
Wireless transmitter	✓	✓
Battery power	✓	✓
Mains power	option	option
WiFi access	Soon	Soon
3g access	Soon	Soon

Eco-eye Smart Technical Specifications

Receiver/Display: LCD display unit with 5 push buttons, LED traffic light system and 4 main digits.

Casing Material	ABS
Dimensions	138 mm x 70 mm x 38mm
Display Size	138mm x 70mm x 38mm
Character size	40mm high
Use	Free standing or wall mount
Battery	2 x 1.5v C cell up to 2 years life Optional AC/DC adapter
Memory Card slot	Specially formatted MMC card
Computer socket	Serial output for use with Eco-eye USB cable

Transmitter: Two part construction with free-standing/screw fix back plate LED & switches

Sensor sockets	3
Casing Material	ABS
Dimensions	90mm x 50mm x 27mm
Transmission frequency	30 channels in 433MHz
Battery	2 x 1.5v AA 3v nominal (2v2 – 3v3) Optional AC/DC adapter
Battery life	12 months
Update rate	4 seconds
Range	30 metres but depends on site conditions

Sensor: 2 part split core current transformer

Maximum cable diameter	13mm	17.5mm x 22.5mm	24mm	36mm
Casing Material	ABS	ABS	ABS	ABS
Maximum Current	100 amps	200 amps	200 amps	200 amps
Attached lead	0.5m	0.5m	3m	3m
Dimensions (without lead) (mm)	35x30x47	50x45x70	50x35x70	60x45x85
Weight	56g	158g	153g	396g

Memory card: Mobile MMC, specially formatted for low power operation

USB cable: 6 pin to USB A. Uses Prolific Serial to USB converter

Eco-eye Smart Computer access

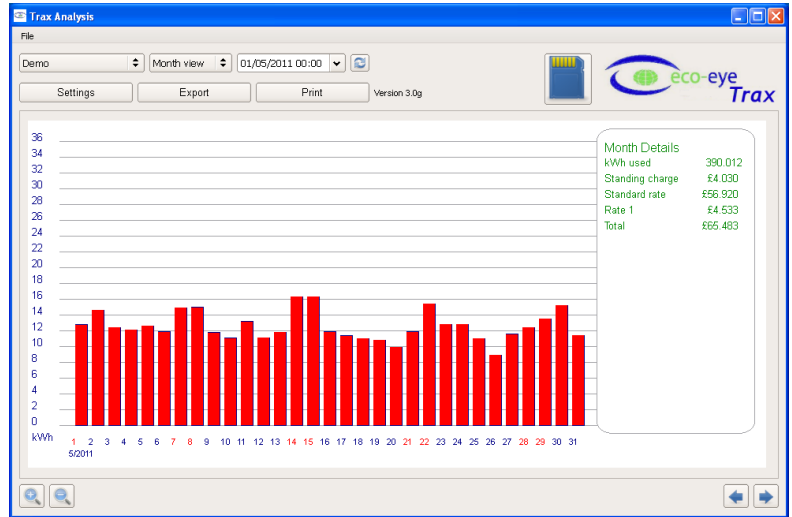
Eco-eye Smart commercial monitoring systems offer off line data logging and a real-time view of the electricity usage.

Trax

for use with Smart 300/600 monitor

Hour, Day, Week, Month and Year graphs with kW and cost calculations
Displays in kW

Readings stored in a database with export to csv available.



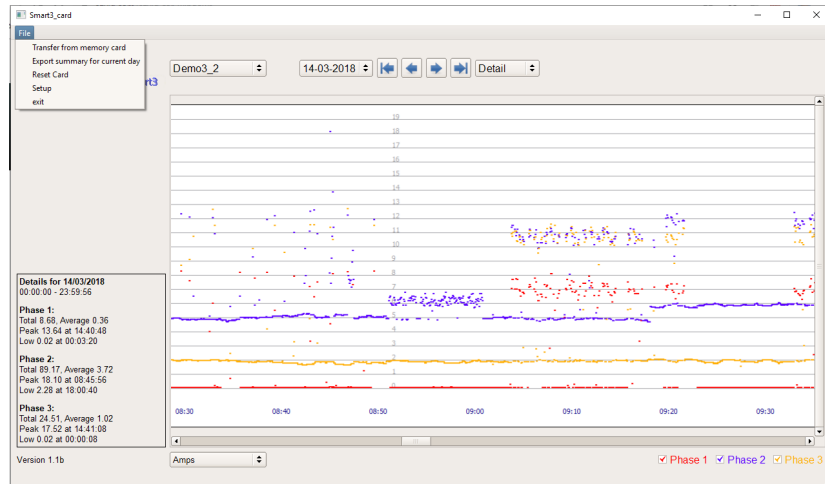
Smart 3

for use with Smart 3pA monitor

Daily graphs with Total, Average, Peak and Low for each phase
Displayed in Amps or kW

Display at 4 second or 10 minute intervals

Readings stored in csv format



Trax and Smart3 come with a real-time display for use with the cable
Additional modules will be available soon for WiFi access and GPRS for remote reporting